

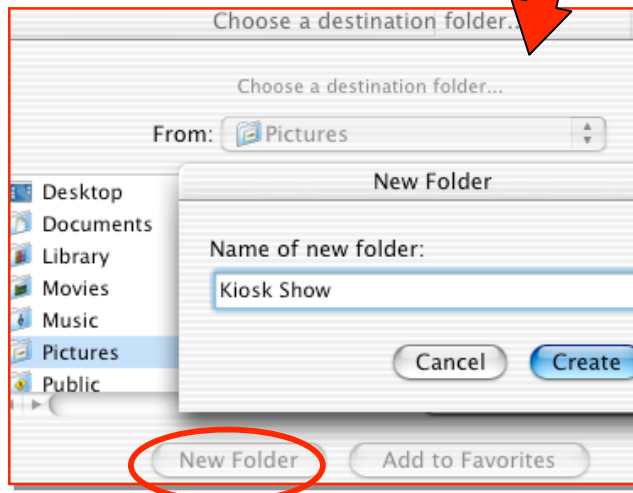
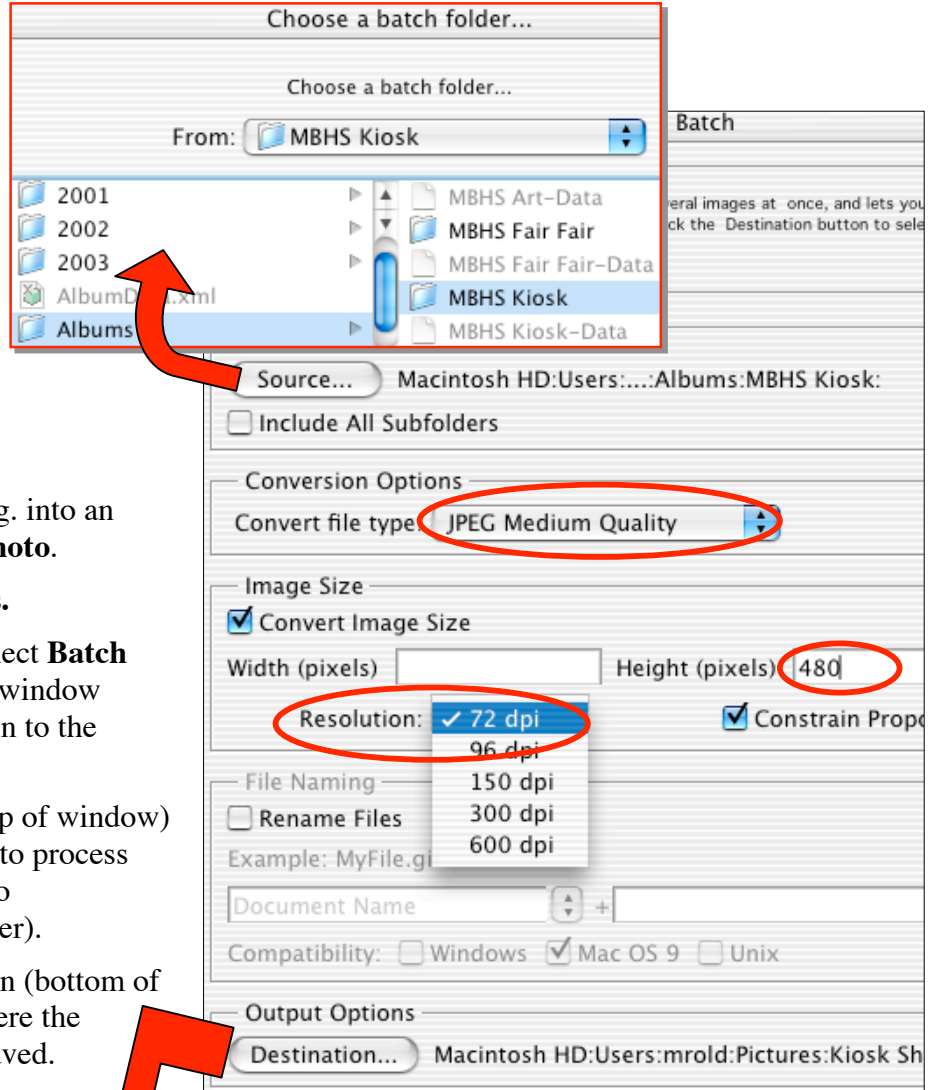
Photoshop Elements – Batch Processing

Batch processing is a quick way to change a folder full of image files all at once. Use batch processing when you want to:

- Change the resolution – works best when you start with high a resolution (e.g. 300 dpi) and go to a low resolution (e.g. 72 dpi)
- Change the file type
- Resize the pictures

How to Prepare Digital Camera Images for a PowerPoint Slide Show

1. Import the images from the digital camera (e.g. into an **Album** in **iPhoto**). Quit **iPhoto**.
2. Open **Photoshop Elements**.
3. Go to the **File** menu and select **Batch Processing**. You will get a window called **Batch** (see illustration to the right).
4. Click the **Source** button (top of window) to locate the files you want to process (navigate to /Pictures/iPhoto Library/Albums/image folder).
5. Click the **Destination** button (bottom of the window) to identify where the processed images will be saved.



6. Navigate to your **Pictures** folder and click the **New Folder** button. Name the destination folder and click **Create**.
7. Make desired changes (see above) for:
 - ✓ Conversion file type (JPEG)
 - ✓ Image Size (480 pixel height is perfect for PowerPoint – divide pixels by dpi to get height in inches)
 - ✓ Resolution (72 dpi is perfect for viewing on a computer; 300 dpi, for prints)
8. Click **OK** to begin processing the images.